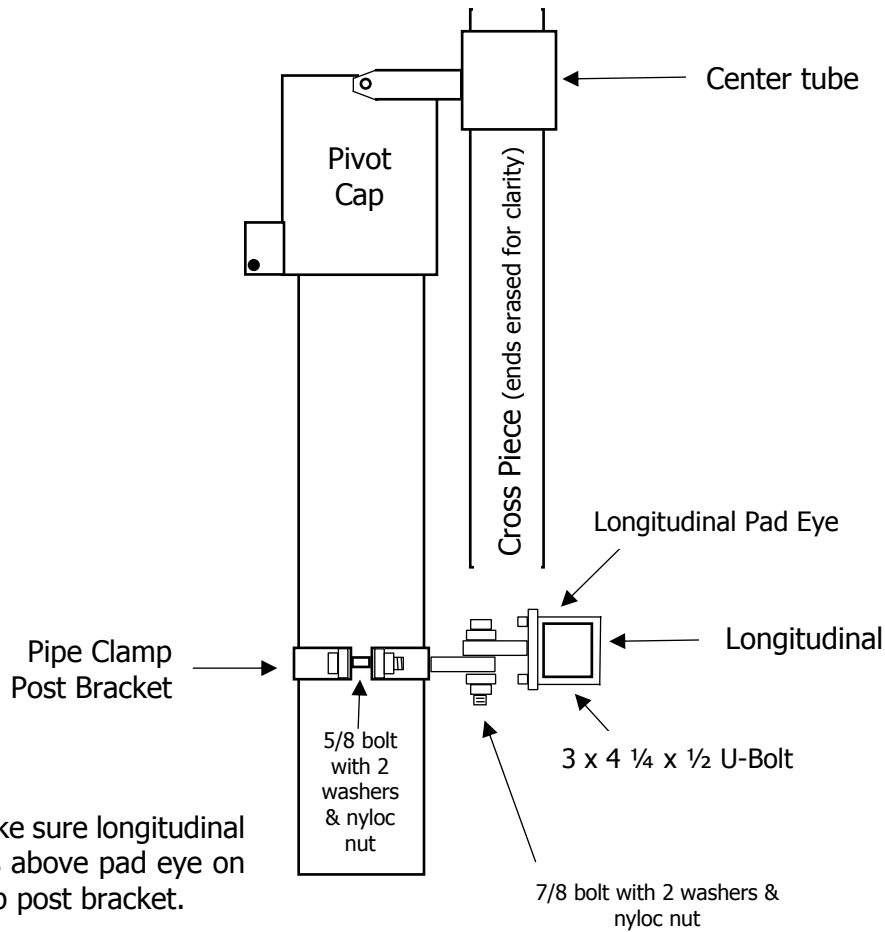




**90° Tilt Kit**



**Note:** Make sure longitudinal pad eye is above pad eye on pipe clamp post bracket.

**Note:** The above shows a side elevation of the 90° tilt kit. You must read all instructions before proceeding.

**PARTS AND HARDWARE****Parts**

- 1 – Longitudinal Pad Eye
- 1 – Pipe Clamp Post Bracket part 1 and 2 (part 1 has welded tab)

**Hardware****Bag #1**

For attaching longitudinal pad eye to longitudinals

- 2 – U-Bolts
- 4 – Washers
- 4 – Lock Nuts

**Bag #2**

For attaching pipe clamp post brackets to post

- 2 – 5/8" x 3 grade 5 Bolts
- 2 – 5/8" Lock Nuts
- 4 – 5/8" Standard Washers

For attaching longitudinal pad eye to pipe clamp post bracket tab

- 1 – 7/8" x 2 1/2 Bolt
- 2 – 7/8" Washers
- 1 – 7/8" Lock Nut

**ASSEMBLY INSTRUCTIONS**

Read all instructions before proceeding.

**NOTE:** Do **NOT** attempt this procedure if there is any wind blowing.

1. Tilt array to approximately 65° at which point telestrut brace will touch top of pivot cap.
2. Remove telestrut.
3. Lower array to 90° position.
4. Under **NO** circumstances allow your hands or any other part of your body between post and longitudinal. **USE EXTREME CAUTION.**
5. Sub assemble pipe clamp post bracket and longitudinal pad eye with 7/8" bolt, washers and nyloc, tighten bolt.
6. Slide this assembly between post and longitudinal. Make sure longitudinal pad eye is on top. Bolt pipe clamp on with 5/8" bolts. Attach two 3 x 4 1/4 U-Bolts to longitudinal pad eye.

**NOTE:**

When raising the array from 90° to a Spring/Summer orientation it is essential that the bottom of the array be pushed out from the post before putting tension on the cable with the winch. This will help relieve tension on the winch at the beginning of the lift.

