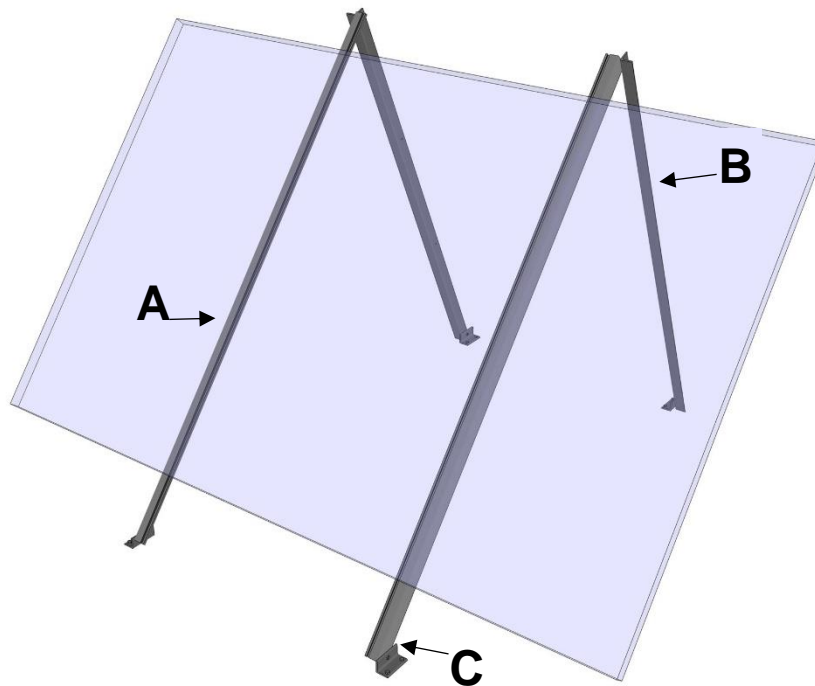




Roof / Wall / Ground Mount Assembly Instructions



Universal S-Rail Single

- A. **ALUMINUM RAILS:** UNIVERSAL T-SLOT ANGLE EXTRUSION 2" X 1½" X 1/8" – 2 PLACES
- B. **BRACES:** 6061 – T6 ALUMINUM ANGLE – 2 PLACES
- C. **MOUNTING FEET:** 6061 – T6 ALUMINUM ANGLE BRACKET – 4 PLACES

Note: By changing the position of the back braces and rails you can move your array more vertical or horizontal.

Rev. 12/17



COMPONENTS FOR THIS MOUNT

- (2) Aluminum Rails**
- (2) Aluminum Braces**
- (4) Mounting Feet**

Hardware

For Rails to Feet/Braces:

6 – 1/4" x 5/8" Stainless Bolts

6 – 1/4" Stainless Flange Nuts

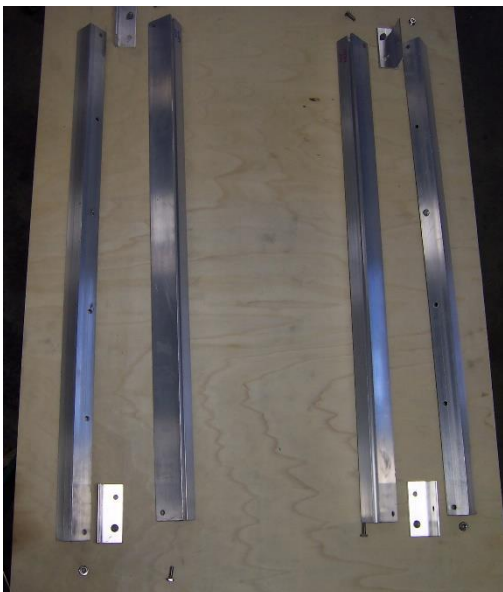
For Panels to Rails:

4 – 1/4" x 5/8" Stainless Bolts

4 – 1/4" Stainless Flange Nuts

NOTE: You will need to purchase whatever fasteners are appropriate for attaching the mount to your particular roof or other mounting surface.

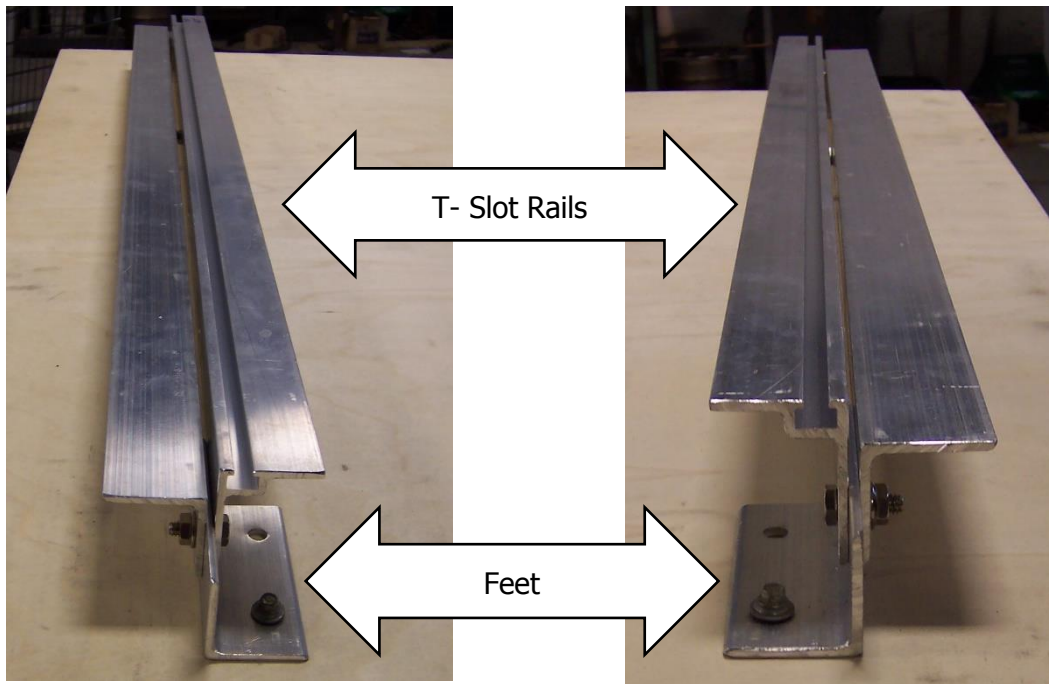
ASSEMBLY INSTRUCTIONS



Assemble loose parts from your package as shown in photos. The stampings "Top Left" and "Top Right" should be opposite one another as in a mirror image.

Before you attach the feet to your mounting surface, bolt your solar panel to the T-slots in the left and right rails (we have left the solar panel out of the photos to show more clearly the mount structure).

Note the extra nut & bolt. Store these in unused hole in braces for use later when mount is assembled in upright (not flat) configuration.



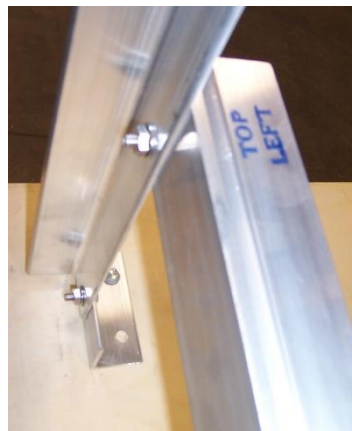
With your panels centered up and bolted to left and right rails, place the rail - panel assembly on your mounting surface. Attach the feet to the mounting surface using bolts or lag screws in the 2 holes punched in each foot. All four feet face each other as shown in picture above. If you want to tip the panel up, unbolt braces and rails from feet as shown (the rails will still be attached to the panel at this point). Note that the rail goes on the inside of the foot and the brace goes on the outside.



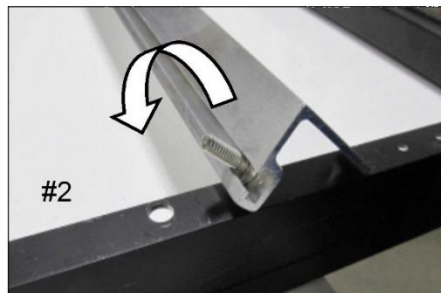
Left Rail

Right Rail

Pick the tilt angle you desire, somewhere between the two angles shown (pictures on next page). Place bolts in corresponding holes and tighten. Make sure panel is held to bottom of rails to allow braces to clear panel in upright configuration.



INSTRUCTIONS FOR ATTACHING SOLAR PANEL TO MOUNTING RAILS



Lay T-Slot rails across the short axis of the panel as shown in Photo #1. Slide stainless bolts into T-slot of rail and position so they are opposite to the mounting holes on the frame of the panel as shown in Photo #2.

Then roll the rails over so the bolts slip into the holes on the panel frame. Place the flange nut on your finger with the flange UP and thread onto the bolt from underneath as shown in Photo #3. Finger tighten.