

Step 1: Open the machine's webpage and click on the System Settings button.

Firefox | Top Page - MX-3610N | 10.0.0.20/main.html | Google | Bookmarks

SHARP  
MX-3610N

Top Page  
Update(R)

Top Page  
Status  
Address Book  
Document Operations  
User Control  
System Settings  
Network Settings  
Application Settings  
Energy Save  
E-mail Alert and Status  
Job Log  
Security Settings  
Custom Links  
Operation Manual Download

Unit Serial Number: 1513378700  
Name: Not Set  
Model Name: MX-3610N  
Machine Location: Not Set  
Current Status: Auto Power Shut-Off  
Memo: Not Set

Display Language Setting: American English  
Execute(J)

Display Pattern Setting: Pattern 1  
Execute(C)

Update(R) | Back to the Top on This Page ▲

Step 2: Click on the Operation Settings button.

**SHARP**  
**MX-3610N**

Total Count

Print(C) Update(R)

Updated Time: 2012/06/14 14:21:37

Total Count	Count Number
Black & White	1325
Full Color	2771
2 Color	0
Single Color	0

---

Send/Receive Job Name	Count Number	
Fax Receive	0	
Scan Send	Black & White	161
	Full Color	92
Fax Send	0	
Scan to HDD	Black & White	0
	Full Color	0
	2 Color	0

---

Print Job Name	Count Number					
	Total	No Toner Save	Toner Save1	Toner Save2	Toner Save3	
Copy	Black & White	879	879	0	0	0
	Full Color	988	988	0	0	0
	2 Color	0	0	0	0	0

Navigation menu (left sidebar):

- Top Page
- Status
- Address Book
- Document Operations
- User Control
- System Settings
  - Total Count
  - Default Settings
  - List Print (User)
  - Paper Tray Settings
  - Paper Type Registration
  - F-Code Memory Box
  - Fax Data Receive/Forward
  - Printer Condition Settings
  - USB-Device Check
  - Operation Settings
  - Device Control
  - Copy Function Settings
  - Printer Settings
  - Image Send Settings
  - Document Filing Settings
  - List Print
  - Sharp OSA Settings

Step 3: Login as the administrator.

**SHARP**  
**MX-3610N**

**Login**

Login(P) Cancel(C)

Authority: admin  
Login Name: Administrator  
Password: (5-255digit)

Please enter the User Authentication information. This message can be edited from System Settings.

[Back to the Top on This Page ▲](#)

Login(P) Cancel(C)

**Step 4: Scroll down to the Remote Operation Settings section of the page.**

Firefox | Operation Settings - MX-3610N | 10.0.0.20/sys\_operation.html

Most Visited | Getting Started | Ebay | HP Download Store | HP Games | Suggested Sites | Web Slice Gallery | Bookmarks

- Job Log
- Security Settings
- Custom Links
- Operation Manual Download

### Preview Setting

Received Data Image Check Setting  
Default List/Thumbnail Display: Thumbnail  
Fax/I-Fax Reception Data: List  
File Retrieve of Document Filing: List  
Main Folder/Quick File Folder: List  
Custom Folder: List

### Remote Operation Settings

Remote Software Operation:  
Operational Authority: Prohibited  
View Password Entry Screen: Display in Both PC and MFP

Operation from Specified PC:  
Operational Authority: Prohibited  
Hostname or IP Address of PC: (Up to 127 characters)  
View Password Entry Screen: Display in Both PC and MFP

Operation by User who Has Password:  
(Service assistance is required.)  
Operational Authority: Prohibited  
View Password Entry Screen: Display in Both PC and MFP

Submit(U) | Update(R) | [Back to the Top on This Page ▲](#)

**Step 5: Set all boxes to Allowed and enter your workstation's IP address.**

**Remote Operation Settings**

Remote Software Operation:  
Operational Authority: Prohibited  
View Password Entry Screen: Display in Both PC and MFP

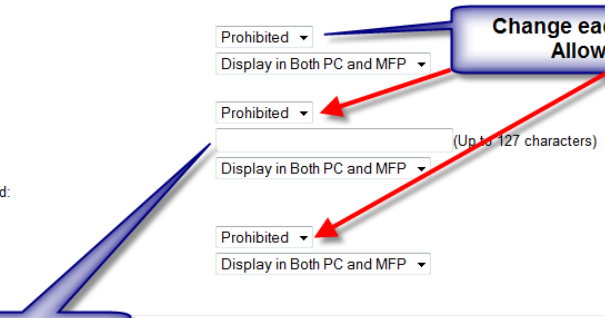
Operation from Specified PC:  
Operational Authority: Prohibited  
Hostname or IP Address of PC: (Up to 127 characters)

View Password Entry Screen: Display in Both PC and MFP

Operation by User who Has Password:  
(Service assistance is required.)  
Operational Authority: Prohibited  
View Password Entry Screen: Display in Both PC and MFP

**Change each box to Allowed.**

**Enter the IP address of your workstation in this box.**



**Step 6: Your completed screen should look like this one. Click the Submit button to save your settings.**

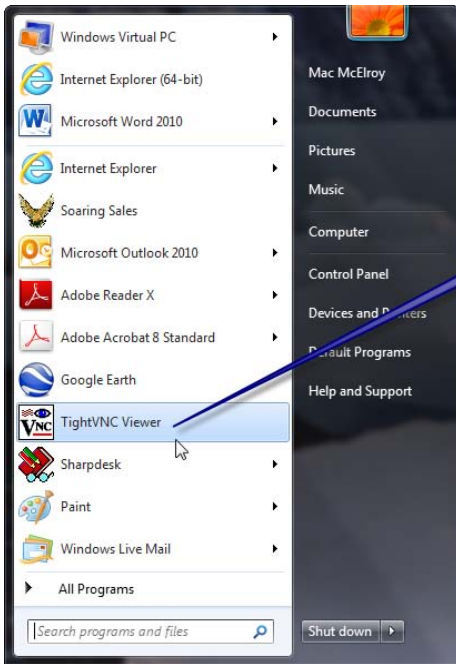
**Remote Operation Settings**

Remote Software Operation:  
Operational Authority: Allowed ▾  
View Password Entry Screen: Display in Both PC and MFP ▾  
Operation from Specified PC:  
Operational Authority: Allowed ▾  
Hostname or IP Address of PC: 10.0.0.124 (Up to 127 characters)  
View Password Entry Screen: Display in Both PC and MFP ▾  
Operation by User who Has Password:  
(Service assistance is required.)  
Operational Authority: Allowed ▾  
View Password Entry Screen: Display in Both PC and MFP ▾

Submit(U) Update(R)

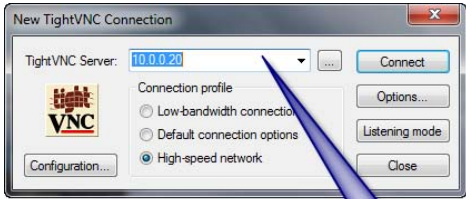
**Your screen should look like this when all steps are completed. Click on the Submit**

Step7: Open your VNC viewer.



Open your VNC viewer.

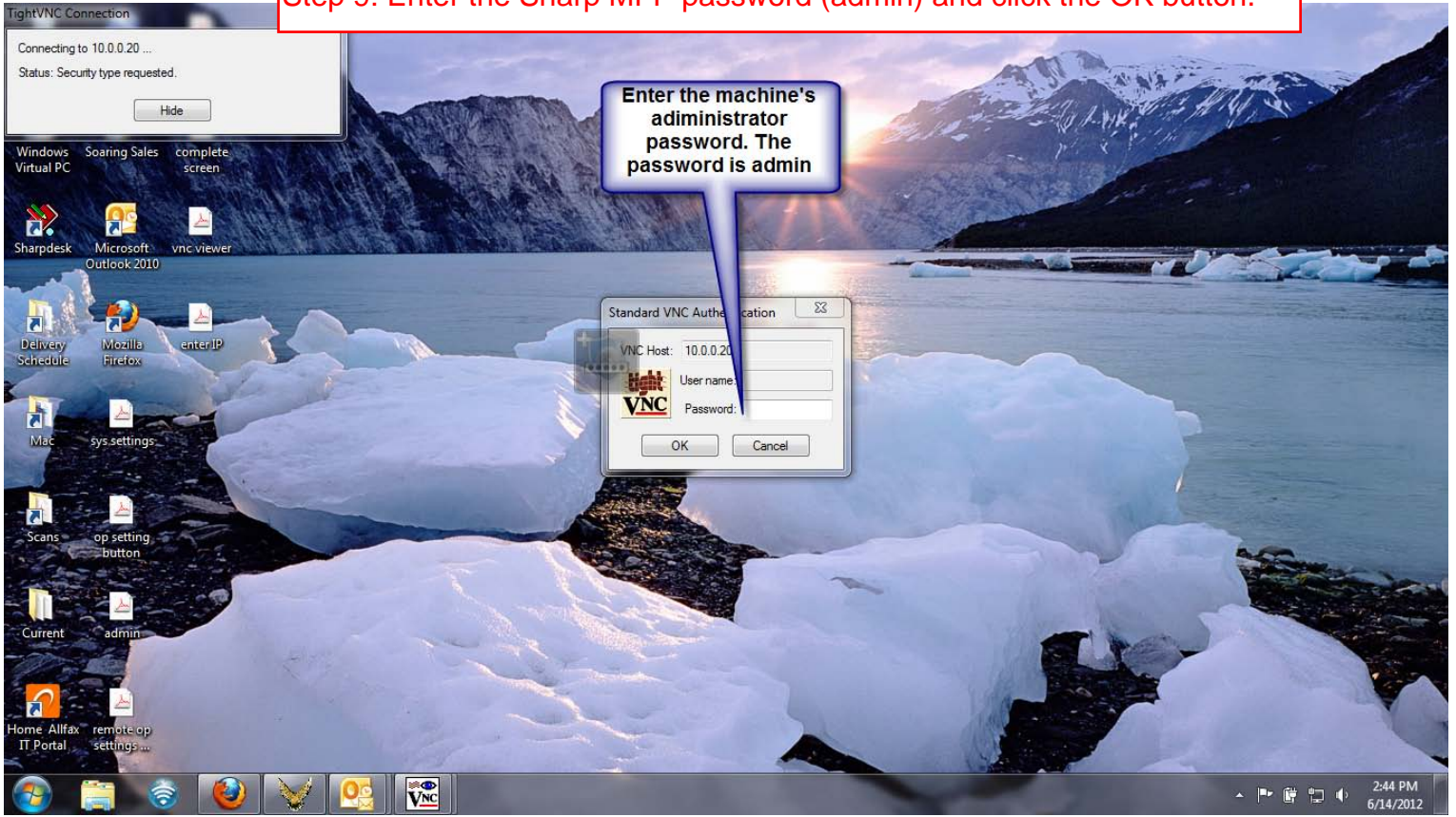
Step 8: Enter the IP address of the Sharp MFP (copier).



Enter the IP address of the Sharp MFP you would like to remote into and click Connect.



Step 9: Enter the Sharp MFP password (admin) and click the OK button.



Step 10: The Remote Front Panel tool is now open. You can operate any function on the machine using your mouse at this point.

