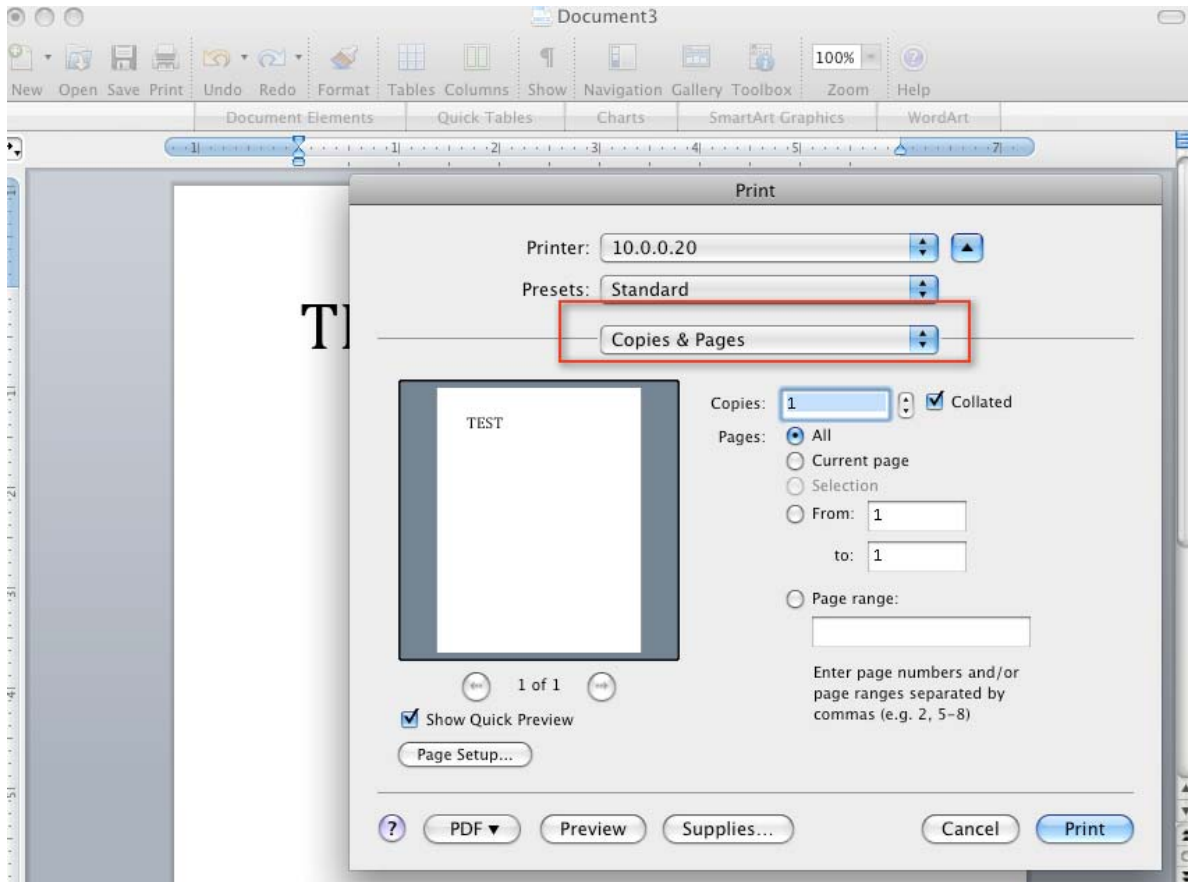


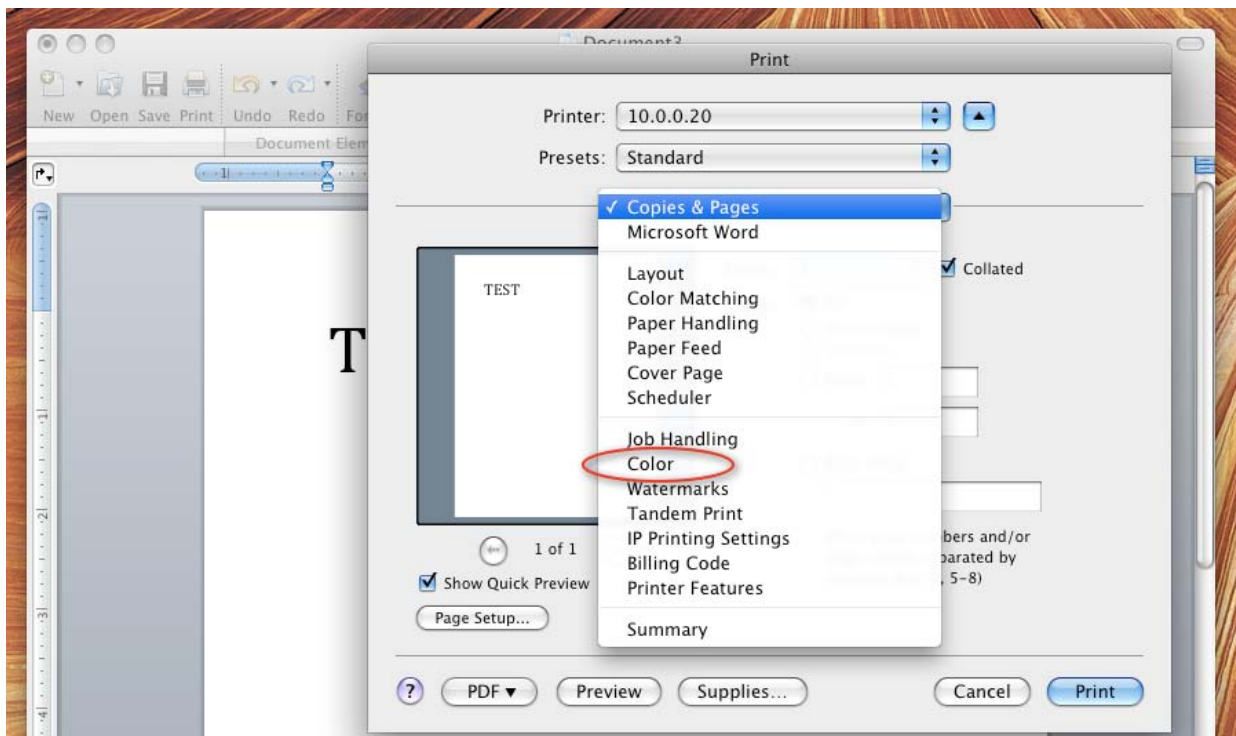
Configuring the driver default to black & white versus color-Mac OS

Step 1: Open a document and open the print menu (PDF/Word document: File>Print)

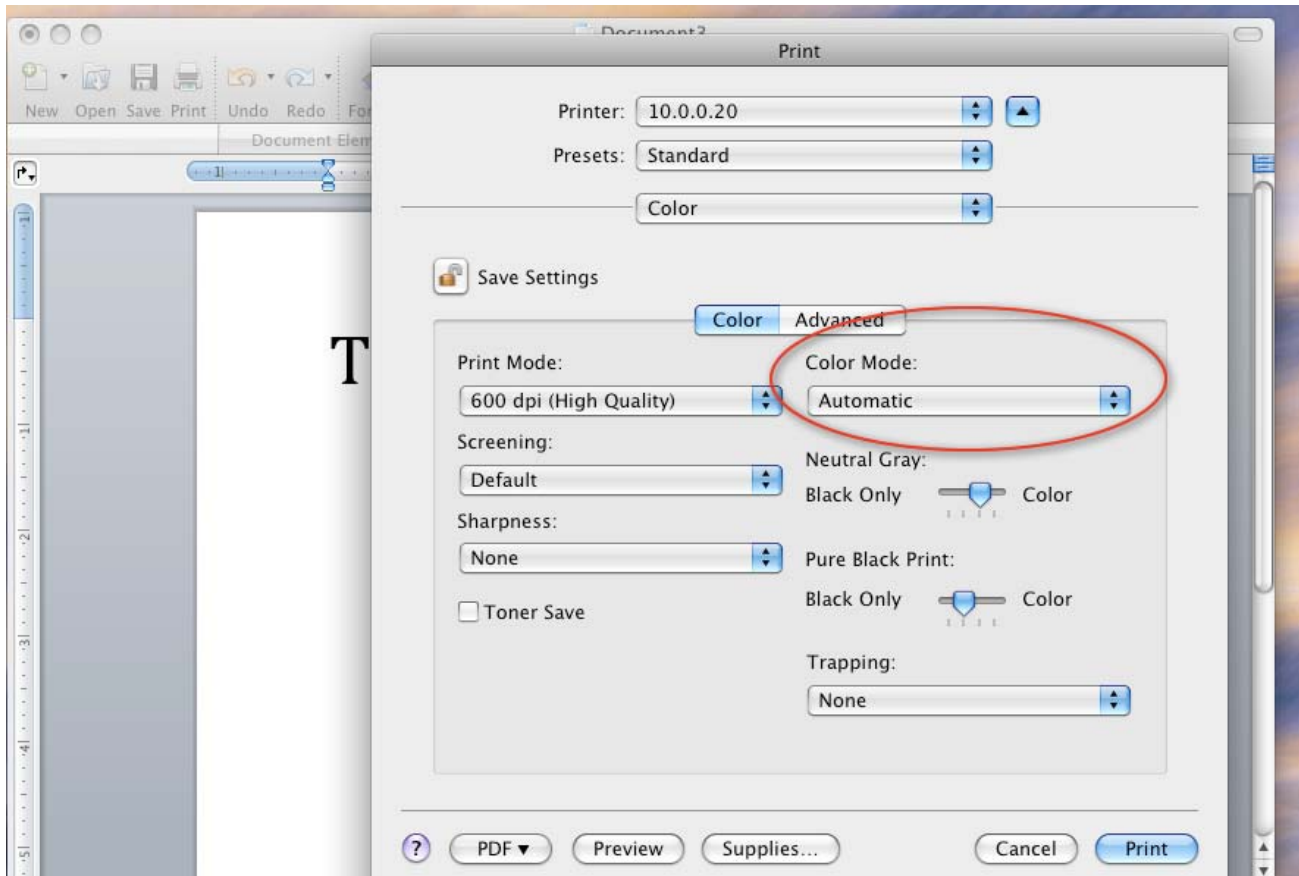
Step2: Select the Drop-Down Arrow to the right of Copies & Prints.



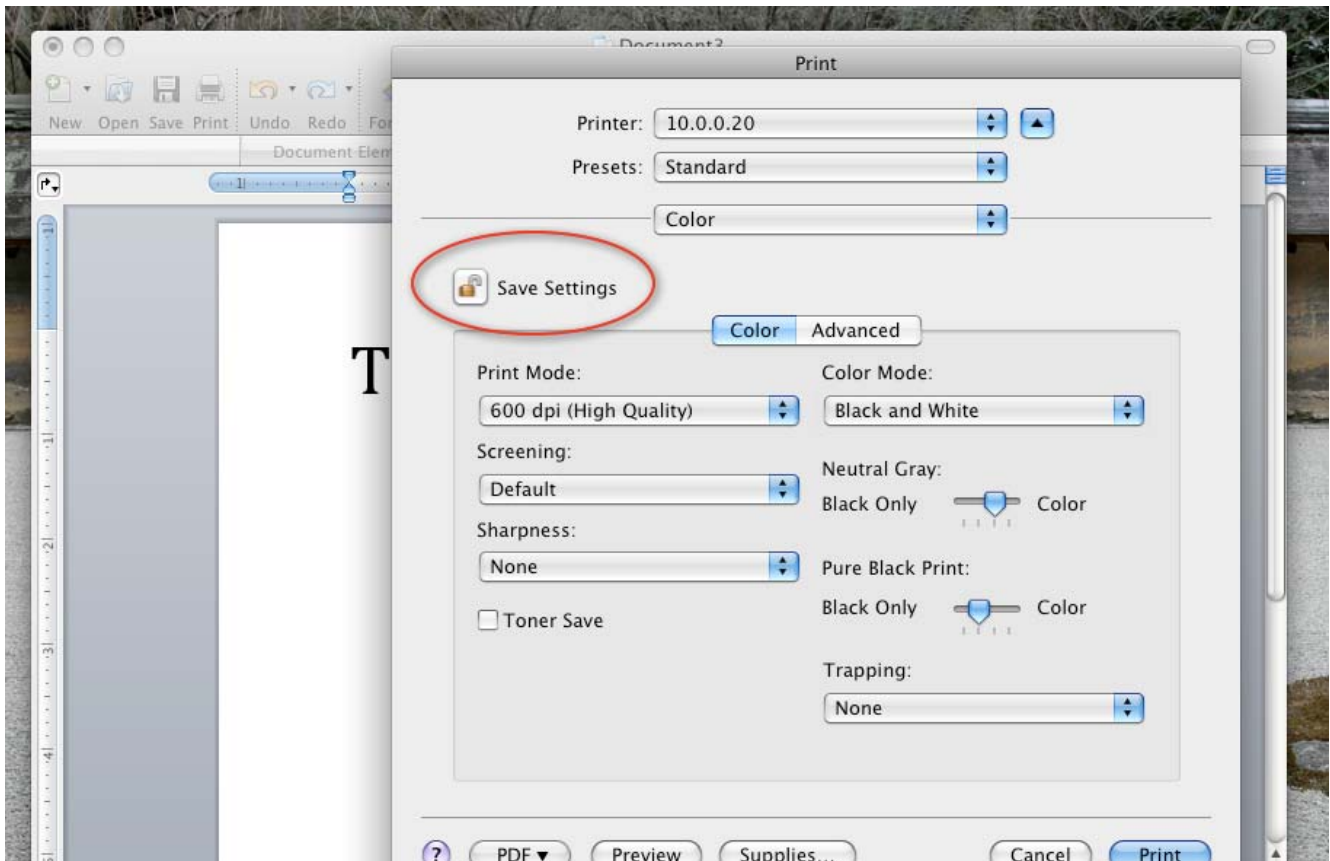
Step 3: Choose Color from the drop down menu.



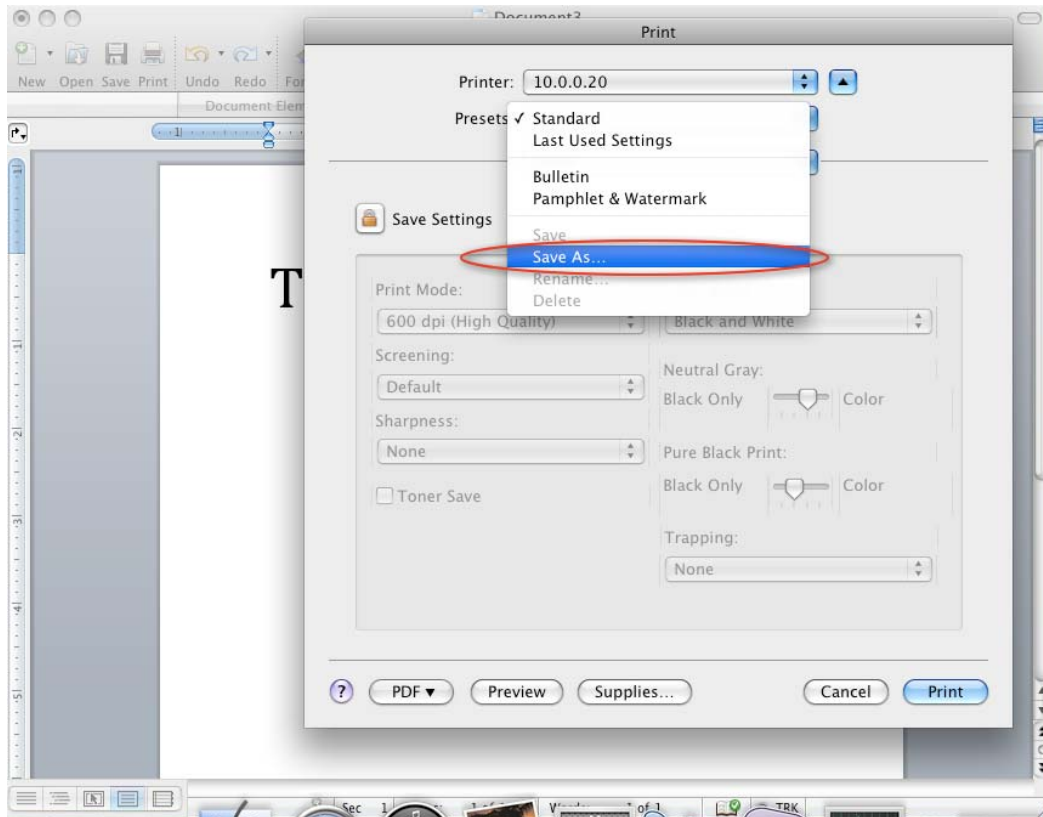
Step 4: Change the Color Mode from Automatic to Black And White.



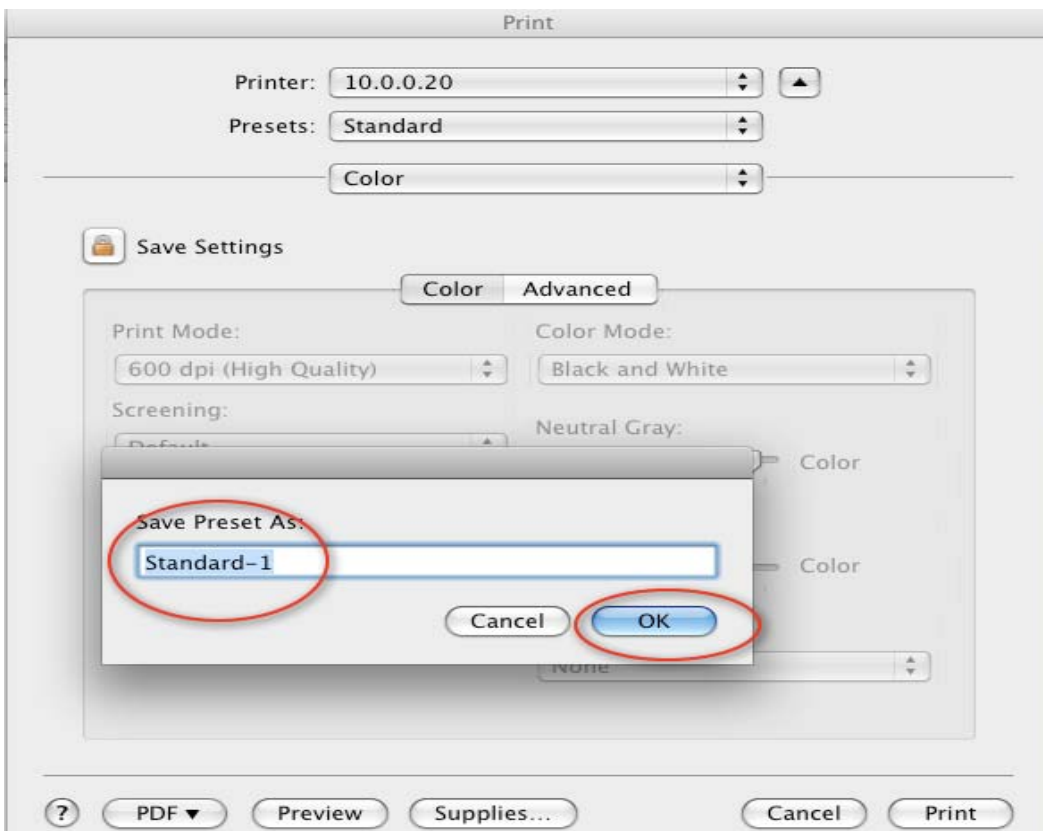
Step 5: Press the lock to save the changes.



Step 6: Click the Drop-Down Arrow in Presets and select Save As.



Step 7: Name the new preset (Black & White Prints) and click the OK button.



Step 7: Select the preset you saved in Step 7 and print the page.... This will save the feature in the driver.

